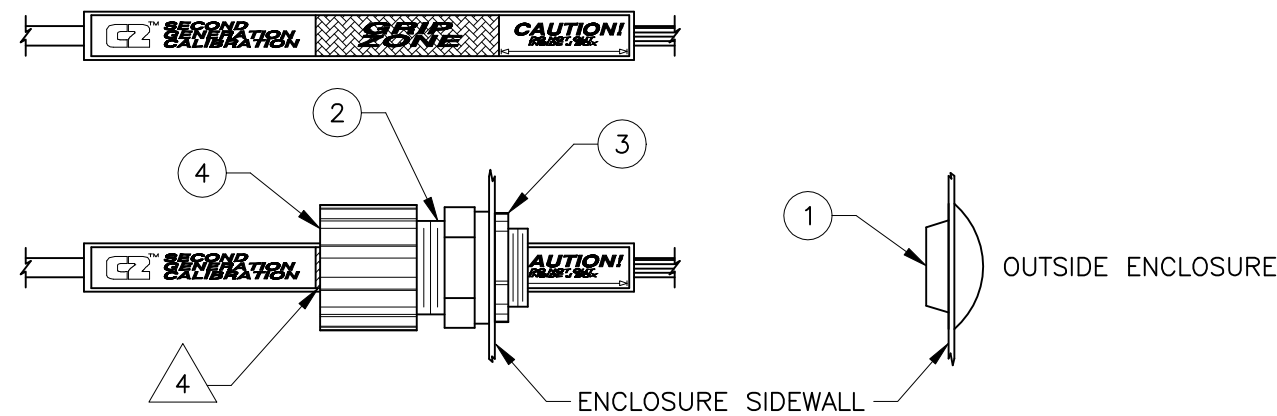


REV.	ECO/DDC	DESCRIPTION	DATE	DRAFT	CHECK	APV'D
A	---	RELEASED	01-26-99	R.B.	L.O.	V.J.C.

### CABLE CONNECTION 3



### MODEL NUMBERS 6

HI 200DNWM-XXX	DESCRIPTION	HARDY P/N
SS	STAINLESS STEEL ENCLOSURE	
1	W/O TB10	0519-0464-01
2	W/TRIM POTS	0519-0464-02
3	W/TB10	0519-0464-03
4	W/TB10 & TRIM POTS	0519-0464-04
PS	PAINTED STEEL ENCLOSURE	
1	W/O TB10	0519-0464-11
2	W/TRIM POTS	0519-0464-12
3	W/TB10	0519-0464-13
4	W/TB10 & TRIM POTS	0519-0464-14

8. SEE SHEET 4 FOR DNWM WIRING.

7. SEE SHEET 3 FOR OUTPUT WIRING.

6. SEE SHEET 2 FOR ENCLOSURE MOUNTING DIMENSIONS.

5 OPTIONAL TRIM POTS CAN NOT BE USED WITH C2 OR SOFCAL.

4 INSERT C2 LOAD CELL CABLE THROUGH GRIP FITTING AND TIGHTEN ON CABLE AREA MARKED GRIP ZONE. ALIGN END OF GRIP FITTING TO COMPLETELY COVER CABLE GRIP ZONE.

3 THE FOLLOWING PARTS ARE SHIPPED INSIDE JUNCTION BOX AND ARE TO BE INSTALLED IN LOCATIONS REQUIRED BY CUSTOMER:

ITEM	PART NUMBER	QTY	DESCRIPTION
*1	2545-0009	1	1.0 DIAMETER PUSH IN PLUG, NEMA 4 RATED
2	2552-0003	6	1.12 DIAMETER RUBBER GASKET
3	2806-0014	6	.50 DIAMETER STEEL LOCKNUT FASTENER
*4	6007-0061	6	1/2 NPT NYLON CORD GRIP STRAIN RELIEF, .375 - .500 DIA (BLUE GRIP)

\* FOR OPTIONS SS3, SS4, PS3 AND PS4, ITEM 1 WILL BE QTY 0 AND ITEM 4 WILL BE QTY 7

2. USE HARDY INSTRUMENTS P/N 6020-0001 C2 CERTIFIED LOAD CELL CABLE.

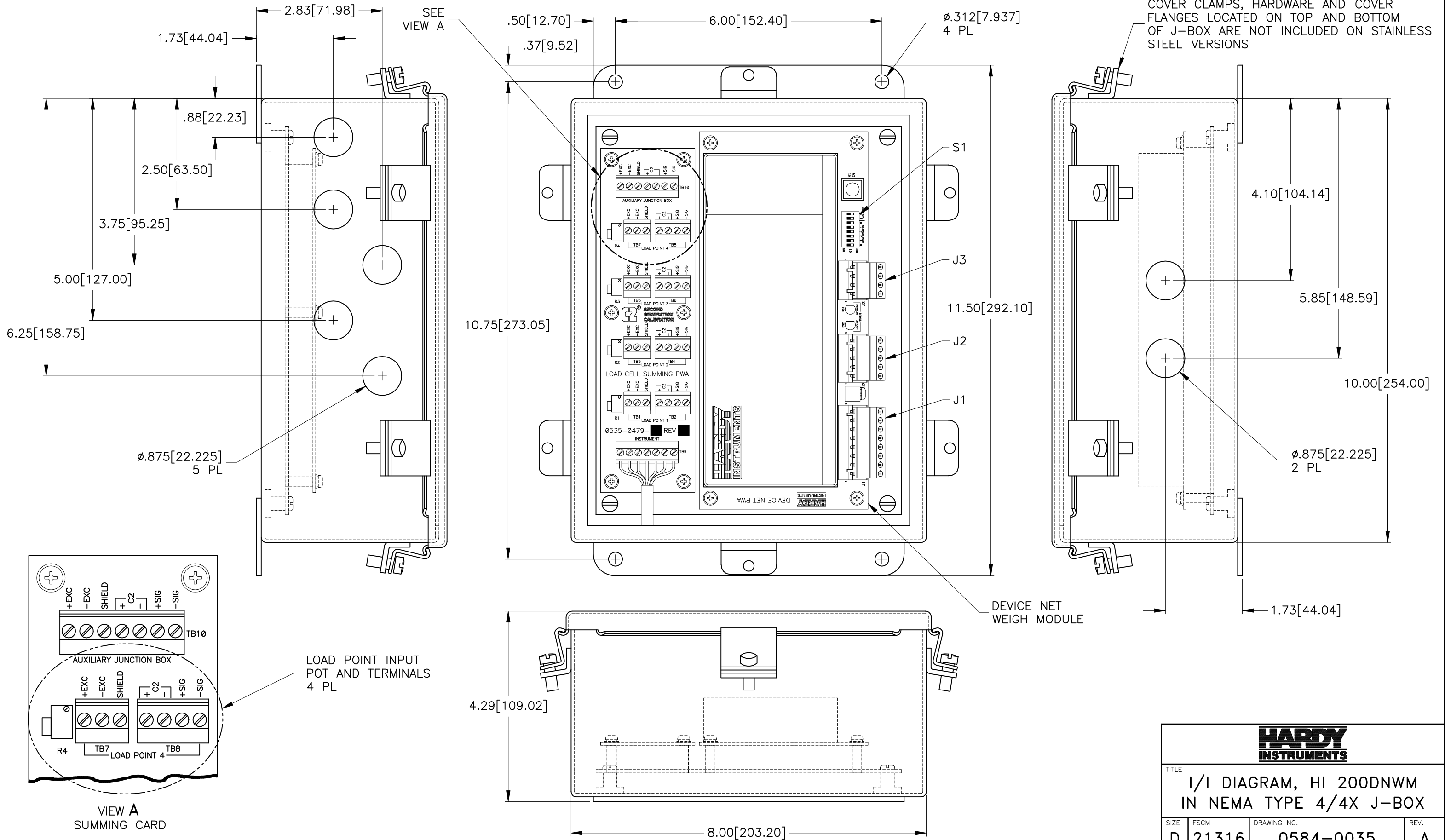
1. REFER TO LOAD CELL CAL SHEET OR WEIGHING ASSEMBLY SELECTION GUIDE FOR LOAD CELL WIRING COLOR CODE.

### NOTES: UNLESS OTHERWISE SPECIFIED

PROPRIETARY NOTICE  
ALL DATA AND INFORMATION CONTAINED IN OR DISCLOSED BY THIS DOCUMENT IS CONFIDENTIAL AND PROPRIETARY INFORMATION OF HARDY INSTRUMENTS INC. AND ALL RIGHTS THEREIN ARE EXPRESSLY RESERVED. BY ACCEPTING THIS MATERIAL THE RECIPIENT AGREES THAT THIS MATERIAL AND THE INFORMATION CONTAINED THEREIN IS HELD IN CONFIDENCE AND IN TRUST AND SHALL NOT BE USED, COPIED, REPRODUCED IN WHOLE OR IN PART, NOR ITS CONTENTS REVEALED IN ANY MANNER TO OTHERS, EXCEPT TO MEET THE SPECIFIC PURPOSE FOR WHICH IT WAS DELIVERED.

		0584-0035	I/I DIAGRAM, H 200DNWM IN NEMA TYPE 4/4X J-BOX		
ITEM	QTY	PART NUMBER	DESCRIPTION	COMMENTS	
<b>PARTS LIST</b>					
UNLESS OTHERWISE SPECIFIED DIMENSIONS ARE IN INCHES AND [MM]. TOLERANCES ARE: FRACTIONS: N/A DECIMALS: .XX = ±.03 .XXX = ±.010 ANGLES: ±0', 30'			CONTRACT NO.		<b>HARDY INSTRUMENTS</b>  I/I DIAGRAM, HI200DNWM IN NEMA TYPE 4/4X J-BOX
			APPROVALS		
			DRAWN R. BILEK	DATE 01-22-99	
			CHECKED L. OFTEDAHL	DATE 01-26-99	
			APPROVED V. CHULA	DATE 01-26-99	
MATERIAL			ISSUED K. McNULTY	DATE 01-27-99	SIZE D
FINISH			PRODUCTION	DATE	FSCM 21316
DO NOT SCALE DRAWING					DRAWING NO. 0584-0035
					REV. A
			FILE NAME: 584035A1.DWG		SCALE: NONE
			SHEET 1 OF 4		

# HI 200DNWM IN NEMA TYPE 4/4X J-BOX

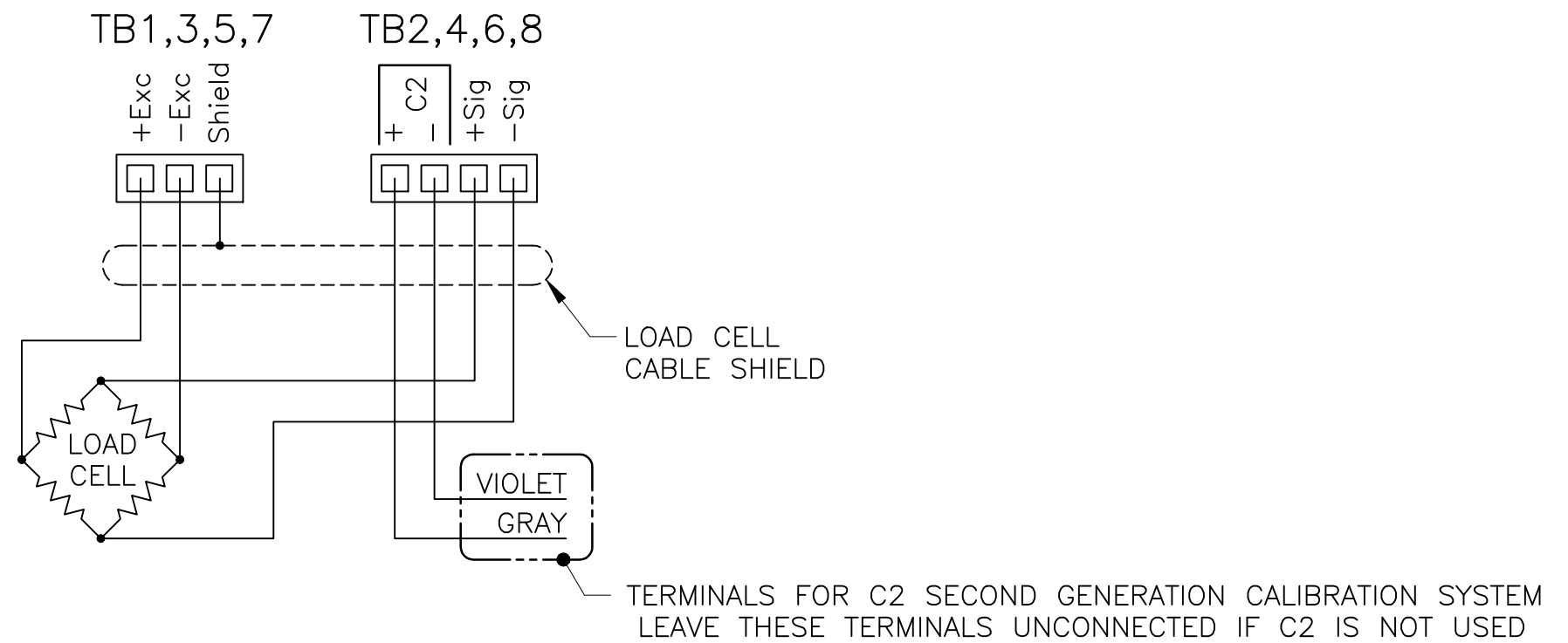


<b>HARDY INSTRUMENTS</b>			
TITLE I/I DIAGRAM, HI 200DNWM IN NEMA TYPE 4/4X J-BOX			
SIZE D	FSCM 21316	DRAWING NO. 0584-0035	REV. A
FILE NAME: 584035A1.DWG		SCALE: NONE	SHEET 2 OF 4

## OUTPUT WIRING

**NOTES:**

1. DO NOT RUN LOAD CELL CABLE PARALLEL TO, OR IN SAME CONDUIT WITH, POWER WIRING, RELAY CABLE OR OTHER HIGH ENERGY CABLES.
2. EXCITATION AND SENSE WIRES TO BE CONNECTED TOGETHER IN JUNCTION BOX WHEN USING A SIX WIRE LOAD CELL.
3. REQUIRED LOAD CELL CABLE FOR C2 SECOND GENERATION CALIBRATION SYSTEM: HARDY INSTRUMENTS P/N 6020-0001.
4. SEE 0596-0224 OPERATION AND INSTALLATION MANUAL FOR ADDITIONAL INFORMATION ON LOAD CELL CONNECTIONS.

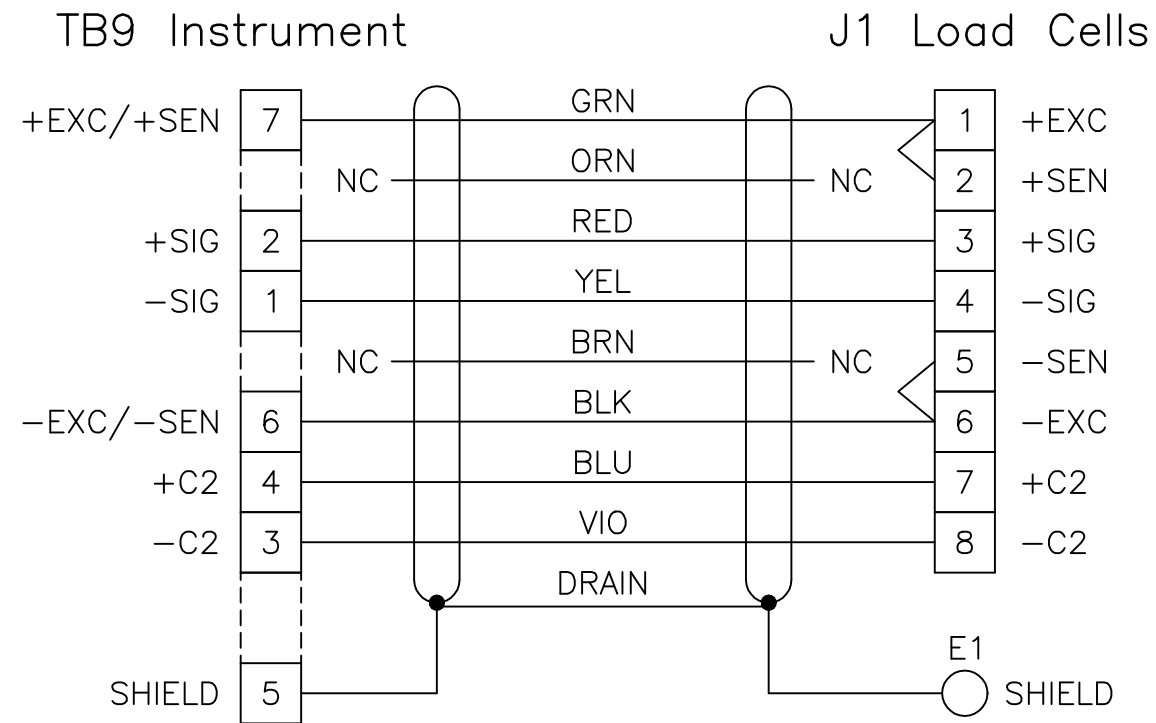


<b>HARDY INSTRUMENTS</b>			
TITLE I/I DIAGRAM, HI 200DNWM IN NEMA TYPE 4/4X J-BOX			
SIZE D	FSCM 21316	DRAWING NO. 0584-0035	REV. A
FILE NAME: 584035A1.DWG		SCALE: NONE	SHEET 3 OF 4

# DNWM WIRING

**NOTES:**

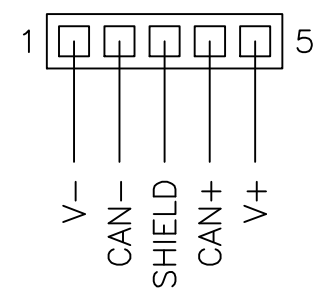
1. WIRED BY HARDY INSTRUMENTS.



**NOTES:**

1. WIRE SIZE: 22 AWG MIN / 12 AWG MAX.

**J2 Can Power**

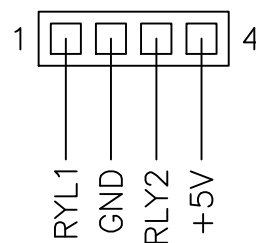


**NOTES:**

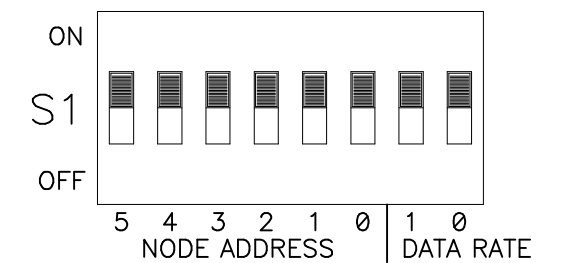
1. RELAY CONTACT RATING: 3 AMPS @ 125 VAC MAX  
1.5 AMPS @ 250 VAC MAX  
NON-FUSED

2. WIRE SIZE: 22 AWG MIN / 12 AWG MAX.

**J3 Relays**



## DIP SWITCH SETTINGS



<b>HARDY INSTRUMENTS</b>			
TITLE <b>I/I DIAGRAM, HI 200DNWM IN NEMA TYPE 4/4X J-BOX</b>			
SIZE <b>D</b>	FSCM <b>21316</b>	DRAWING NO. <b>0584-0035</b>	REV. <b>A</b>
FILE NAME: 584035A1.DWG		SCALE: NONE	SHEET 4 OF 4