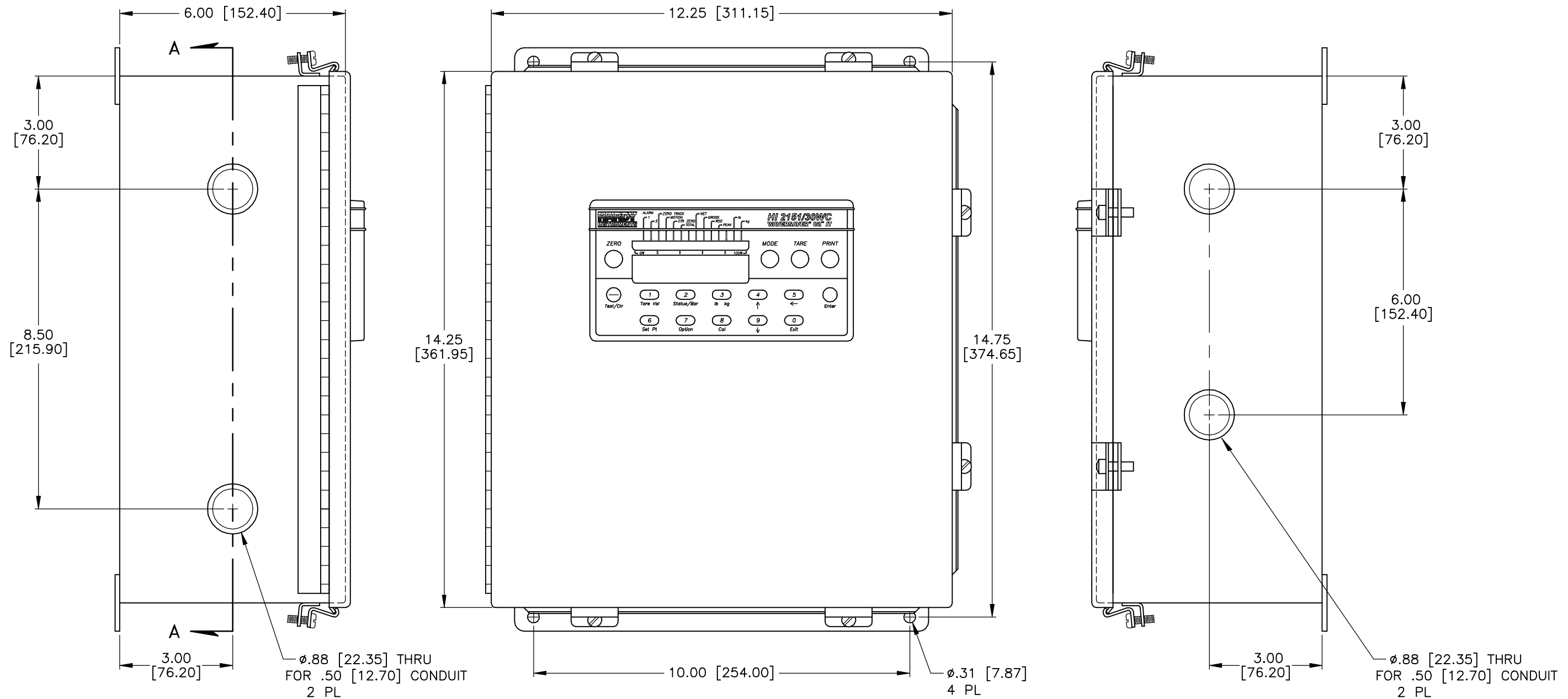


REV.	ECO/DDC	DESCRIPTION	DATE	DRAFT	CHECK	APV'D
A	----	RELEASED FOR PRODUCTION.	05-08-98	L.P.	PW	PW
B	\	REVISED PER ECN.	01-25-99	R.B.	L.B.O.	H.T.
C	07369	REVISED PER ECN.	05-08-00	L.B.O.	V.J.C.	G.I.

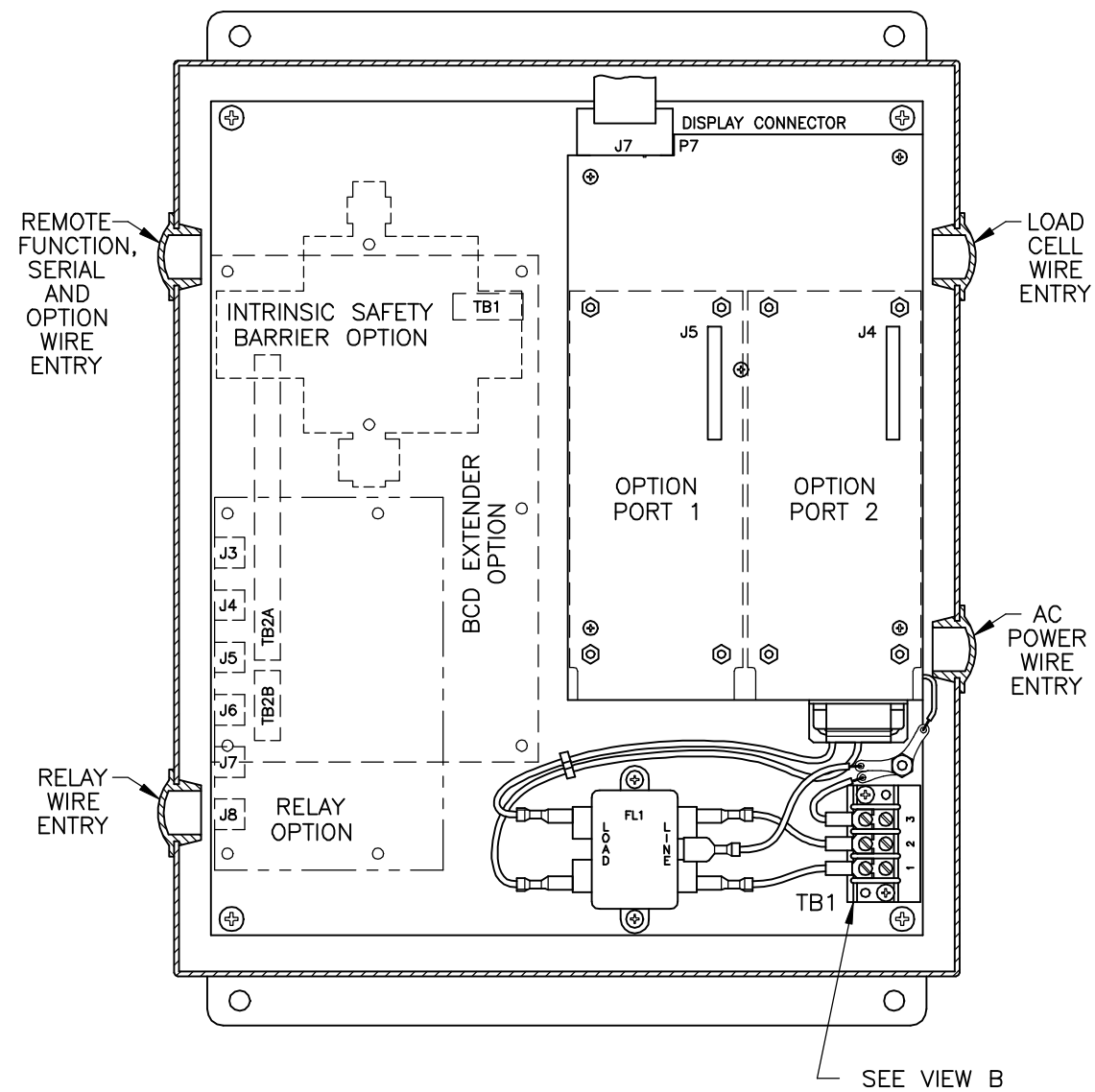


6. INTERCONNECT WIRING FOR UNITS INSTALLED IN HAZARDOUS LOCATIONS TO BE PER NATIONAL ELECTRIC CODE (ANSI/NFPA-70).
5. EXERCISE CAUTION WHEN ADDING OR ENLARGING HOLES IN ENCLOSURE. METAL PARTICLES COULD SERIOUSLY DAMAGE ELECTRONICS. COVER ELECTRONICS BEFORE DRILLING.
4. TO CONFORM WITH NEMA 4 OR 4X RATINGS, CONNECTIONS TO ENCLOSURE SHOULD BE MADE WITH NEMA 4 OR 4X CONDUIT FITTINGS.
3. DO NOT ROUTE ANY SIGNAL, VOLTAGE OR GROUND WIRES UNDER OR BETWEEN PRINTED WIRING BOARDS.
2. SEE SHEET 3 FOR CABLE TERMINATIONS.
1. SEE 0596-0224 FOR OPERATION AND INSTALLATION MANUAL.

NOTES: UNLESS OTHERWISE SPECIFIED

PROPRIETARY NOTICE
 ALL DATA AND INFORMATION CONTAINED IN OR DISCLOSED BY THIS DOCUMENT IS CONFIDENTIAL AND PROPRIETARY INFORMATION OF HARDY INSTRUMENTS INC. AND ALL RIGHTS THEREIN ARE EXPRESSLY RESERVED. BY ACCEPTING THIS MATERIAL THE RECIPIENT AGREES THAT THIS MATERIAL AND THE INFORMATION CONTAINED THEREIN IS HELD IN CONFIDENCE AND IN TRUST AND SHALL NOT BE USED, COPIED, REPRODUCED IN WHOLE OR IN PART, NOR ITS CONTENTS REVEALED IN ANY MANNER TO OTHERS, EXCEPT TO MEET THE SPECIFIC PURPOSE FOR WHICH IT WAS DELIVERED.

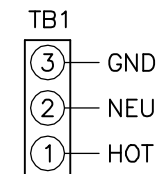
ITEM	QTY	PART NUMBER	DESCRIPTION	COMMENTS
0584-0029 INSTALLATION/INTERCONNECTION DIAGRAM, HI 2151/30WC-WS				
PARTS LIST				
UNLESS OTHERWISE SPECIFIED DIMENSIONS ARE IN INCHES AND [MM]. TOLERANCES ARE: FRACTIONS: N/A DECIMALS: .XX = ±.03 .XXX = ±.010 ANGLES: ±0°, 30'		CONTRACT NO.		
		APPROVALS		
DRAWN		DATE		
R. BILEK		11-19-97		
CHECKED		DATE		
P. WYLIE		11-21-97		
APPROVED		DATE		
D. BOYDEN		11-21-97		
FINISH		DATE		
K. McNULTY		11-24-97		
PRODUCTION		DATE		
DO NOT SCALE DRAWING				
TITLE		SIZE		REV.
INSTALLATION/INTERCONNECTION DIAGRAM, HI 2151/30WC-WS		D 21316		C
DRAWING NO.		FILE NAME:		SCALE:
0584-0029		584029C1.DWG		NONE
SHEET		1 OF		4



VIEW A-A

POWER

CUSTOMER
AC POWER WIRING



FUSE RATING:
.5 AMP, 250V
SLOW-BLOW

VIEW B-B

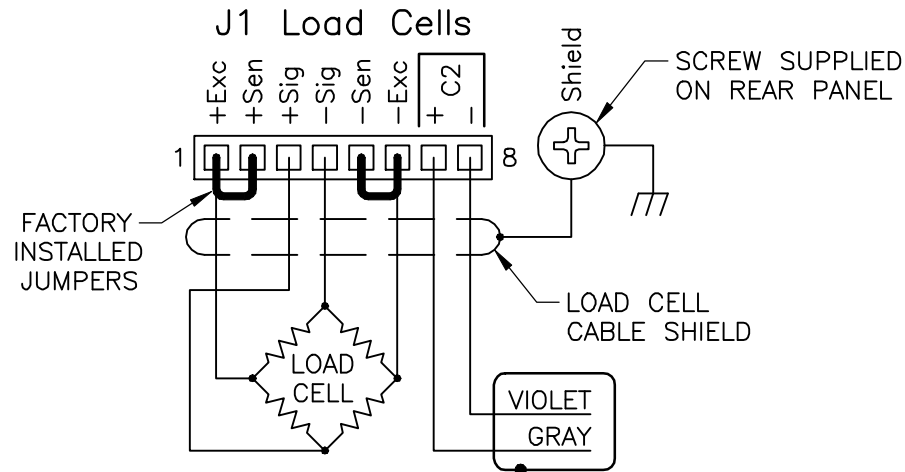
**HARDY
INSTRUMENTS**

TITLE:
INSTALLATION/INTERCONNECTION
DIAGRAM, HI 2151/30WC-WS

SIZE	FSCM	DRAWING NO.	REV.
D	21316	0584-0029	C
FILE NAME: 584029C1.DWG		SCALE: NONE	SHEET 2 OF 4

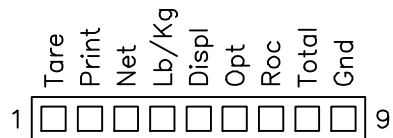
NOTES:

- DO NOT RUN LOAD CELL CABLE PARALLEL TO, OR IN SAME CONDUIT WITH, POWER WIRING, RELAY CABLE OR OTHER HIGH ENERGY CABLES.
- FACTORY INSTALLED JUMPERS TO REMAIN IN PLACE FOR FOUR WIRE LOAD CELL CONNECTION. JUMPERS TO BE REMOVED FOR SIX WIRE OR EIGHT WIRE (C2) LOAD CELL CONNECTIONS. EXCITATION AND SENSE WIRES TO BE CONNECTED TOGETHER IN JUNCTION BOX.
- REQUIRED LOAD CELL CABLE FOR C2 SECOND GENERATION CALIBRATION SYSTEM: HARDY INSTRUMENTS P/N 6020-0001.
- SEE 0596-0224 OPERATION AND INSTALLATION MANUAL FOR ADDITIONAL INFORMATION ON LOAD CELL CONNECTIONS.



TERMINALS FOR C2 SECOND GENERATION CALIBRATION SYSTEM
LEAVE THESE TERMINALS UNCONNECTED IF C2 IS NOT USED

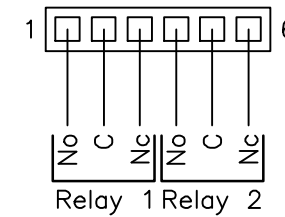
J2 Remote Functions



NOTES:

- MOMENTARY FUNCTIONS REQUIRE 100 mSEC OR GREATER TO GND FOR PROPER ACTIVATION, ONLY USE REMOTE FUNCTIONS GROUND (J2 PIN 9) FOR ACTIVATING REMOTE FUNCTION.
- REMOTE FUNCTIONS ARE NOT ISOLATED. DO NOT BUNDLE WIRING FROM REMOTE FUNCTIONS WITH POWER WIRING, RELAY CABLE OR ANY OTHER HIGH ENERGY CABLES.
- WIRE SIZE: 22 AWG MIN / 12 AWG MAX.

J5 Relays

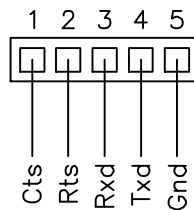


NOTES:

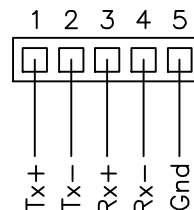
- RELAY CONTACT RATING: 3 AMPS @ 125 VAC MAX
1.5 AMPS @ 250 VAC MAX
NON-FUSED
- WIRE SIZE: 22 AWG MIN / 12 AWG MAX.

J3 Serial Port Connections

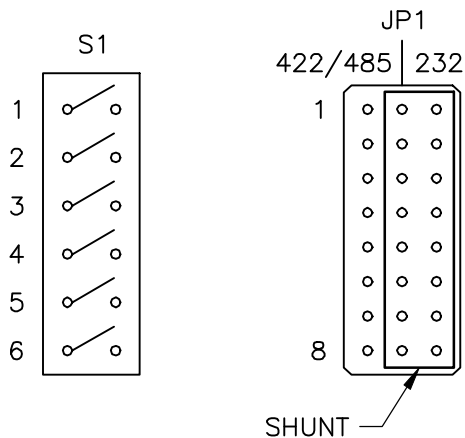
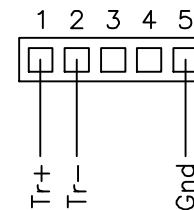
RS-232C (A1 OPTION)



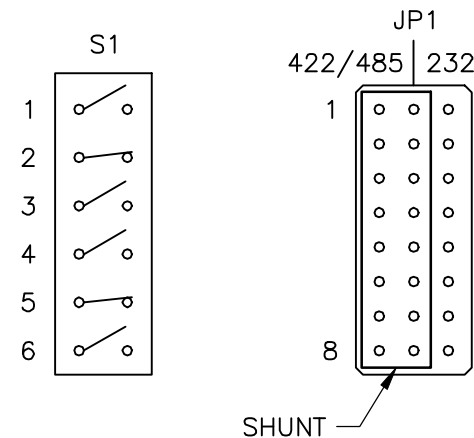
EIA 422 (A2 OPTION)



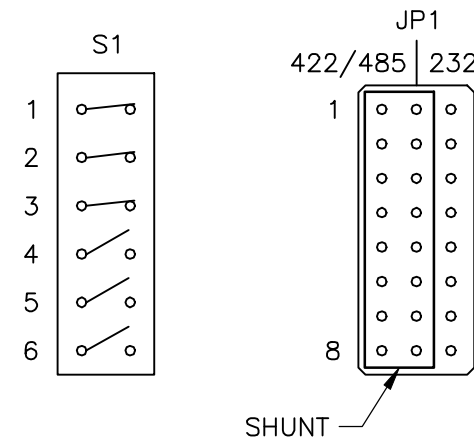
EIA 485 (A3 OPTION)



MAIN CONTROLLER PWB DIP SWITCH AND JUMPER BLOCK CONFIGURATION



MAIN CONTROLLER PWB DIP SWITCH AND JUMPER BLOCK CONFIGURATION



MAIN CONTROLLER PWB DIP SWITCH AND JUMPER BLOCK CONFIGURATION

NOTES:

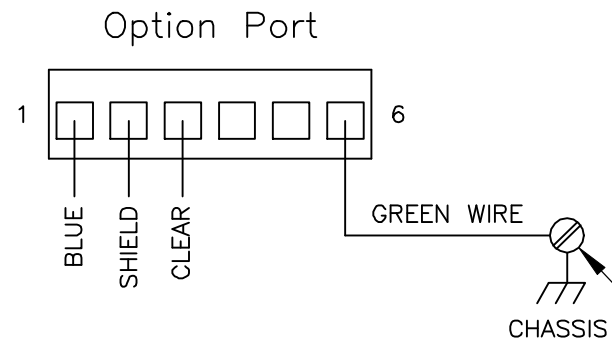
- CUSTOMER TO SELECT DESIRED SERIAL PORT INTERFACE OPTION WHEN ORDERING UNIT.
- DIAGRAMS SHOWN DEPICT FACTORY DEFAULT S1 DIP SWITCH SETTINGS ONLY. REFER TO 0596-0224 OPERATION AND INSTALLATION MANUAL FOR DIP SWITCH SETTINGS CONCERNING SPECIFIC SERIAL PORT INTERFACE APPLICATIONS.
- MAIN CONTROLLER PWB LOCATED INSIDE UNIT. REFER TO 0596-0224 OPERATION AND INSTALLATION MANUAL FOR ACCESS TO S1 DIP SWITCH AND JP1 JUMPER BLOCK.
- WIRE SIZE: 22 AWG MIN / 12 AWG MAX.



TITLE:
INSTALLATION/INTERCONNECTION
DIAGRAM, HI 2151/30WC-WS

SIZE	FSCM	DRAWING NO.	REV.
D	21316	0584-0029	C
FILE NAME: 584029C1.DWG		SCALE: NONE	SHEET 3 OF 4

REMOTE I/O INTERFACE FOR ALLEN-BRADLEY NETWORK OPTION



WIRE: 78 OHM SHIELDED TWISTED PAIR TWINAX CABLE (20 AWG)

CABLE DIAMETER RANGE:
.157[3.998] - .315[8.000]

BAUD	JUMPER
57.6 AND 115.2K	W1
230.4K	W2

* STANDARD CONFIGURATION: 57.6 AND 115.2K BAUD
NOTE: FOR MORE INFORMATION, REFER TO 0596-0173 OPERATION AND INSTALLATION MANUAL.

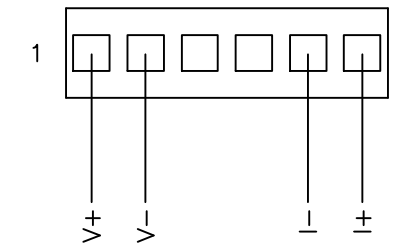
LUG ON GREEN WIRE MUST BE ATTACHED TO INSTRUMENT PANEL. GREEN WIRE AND LUG SUPPLIED BY HARDY INSTRUMENTS

150 OHM @ 57.6K BAUD	10,000 FT (3048 M)
150 OHM @ 115.2K BAUD	5,000 FT (1524 M)
82 OHM @ 230.4K BAUD	2,500 FT (762 M)

NOTE: FOR MORE INFORMATION, REFER TO 0596-0173 OPERATION AND INSTALLATION MANUAL.

ANALOG OUTPUT OPTION

Option Port



WIRE SIZE:
12 AWG - 22 AWG

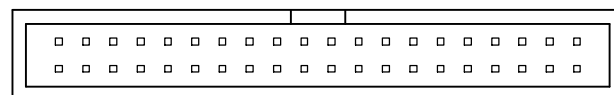
CURRENT SELECTION		VOLTAGE SELECTION	
CONFIGURATION	JUMPER	CONFIGURATION	JUMPER
0 - 20mA	W1	0 - 5 VDC	W3
4 - 20mA	W2	0 - 10 VDC	W4

* STANDARD CONFIGURATION: 4 - 20mA, 0 - 10 VDC

NOTE: FOR MORE INFORMATION, REFER TO 0596-0224 OPERATION AND INSTALLATION MANUAL.

BCD OPTION

Option Port 2 Only



WIRING: 40 POSITION RIBBON CABLE (SUPPLIED BY HARDY INSTRUMENTS)

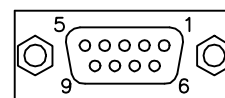
PRINT POLARITY SELECT	PRINT	W1
	PRINT	W2

* STANDARD CONFIGURATION: PRINT

NOTE: FOR MORE INFORMATION, REFER TO 0596-0224 OPERATION AND INSTALLATION MANUAL.

PROFIBUS OPTION

Option Port

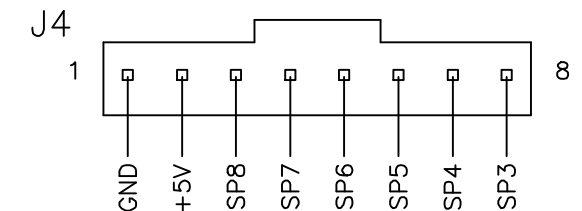


1	NC
2	NC
3	RXD/TXD-P
4	CNTR-P
5	GND
6	+5V
7	NC
8	RXD/TXD-N
9	NC

NOTE: FOR MORE INFORMATION, REFER TO 0596-0231-01 OPERATION AND INSTALLATION MANUAL.

TTL OUTPUT OPTION

(Used To Drive Optional Relays)



TTL OUTPUTS: 300mA PER LINE (NON-FUSED)
WIRING: CABLE SUPPLIED BY HARDY INSTRUMENTS

HARDY INSTRUMENTS

TITLE:
INSTALLATION/INTERCONNECTION DIAGRAM, HI 2151/30WC-WS

SIZE	FSCM	DRAWING NO.	REV.
D	21316	0584-0029	C

FILE NAME: 584029C1.DWG SCALE: NONE SHEET 4 OF 4