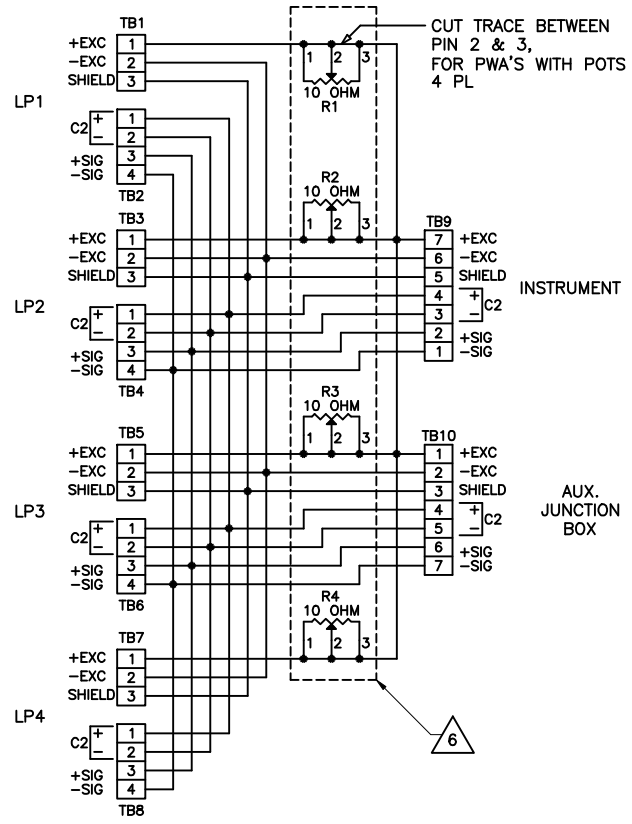
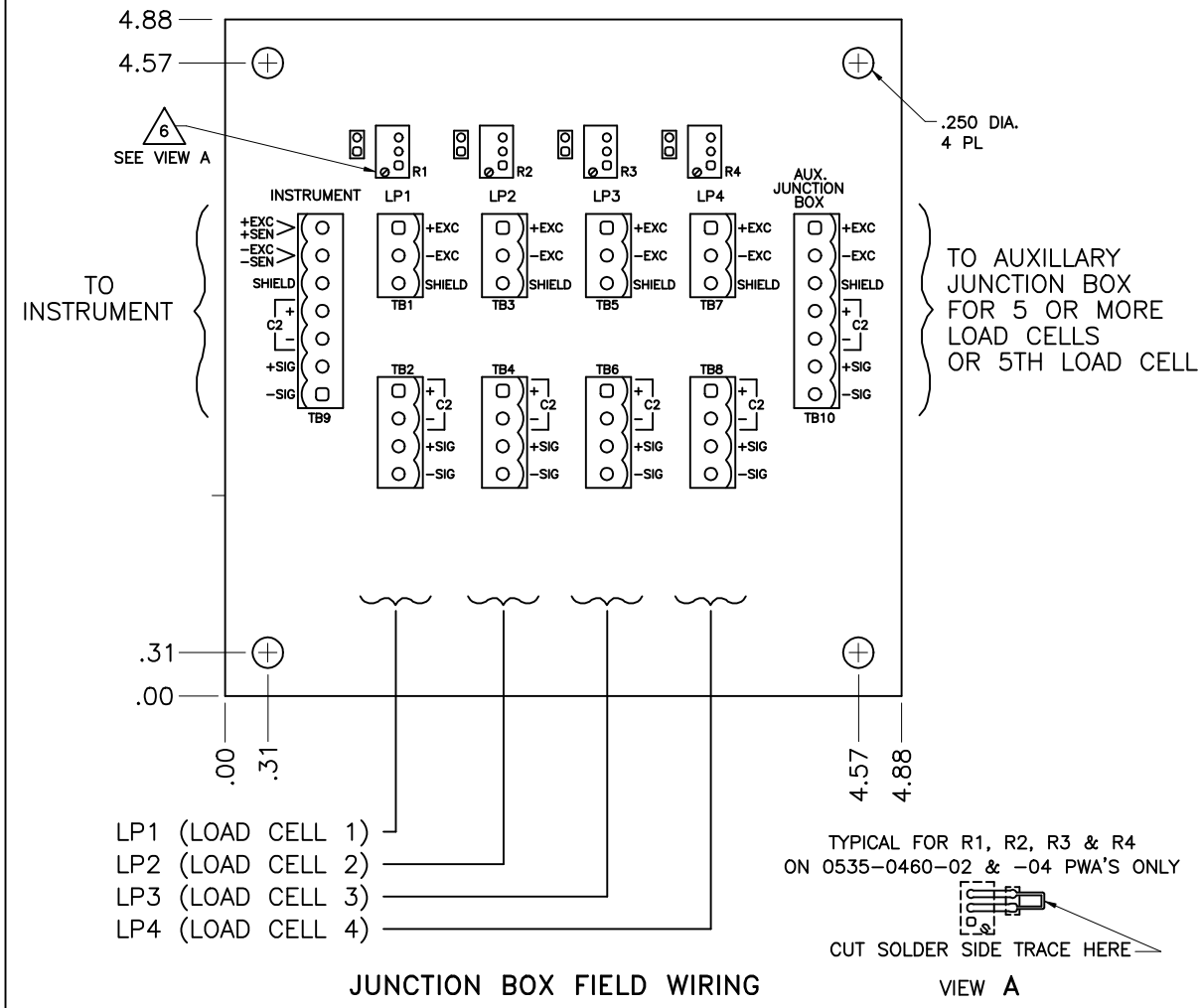


REV.	ECO	DESCRIPTION	DATE	DRAFT	CHECK	APV'D
A	----	RELEASED FOR PRODUCTION.	07-11-94	P.C.C.	R.B.	B.O.
B	6769 6863	REVISED PER ECNS.	08-28-96	R.B.	P.W.	D.C.B.
C	05286	REVISED PER ECN.	11-14-97	V.J.C.	P.W.	D.C.B.
D	08636	REVISED PER ECN.	01-17-03	S.N.	V.J.C.	T.L.M.

SCHEMATIC DIAGRAM



NOTE: FOR SENSE WIRING ATTACH PLUS SENSE TO TB9 - PIN 7 (+EXC) AND MINUS SENSE TO TB9 - PIN 6 (-EXC)



- LP1 (LOAD CELL 1)
- LP2 (LOAD CELL 2)
- LP3 (LOAD CELL 3)
- LP4 (LOAD CELL 4)

TYPICAL FOR R1, R2, R3 & R4 ON 0535-0460-02 & -04 PWA'S ONLY

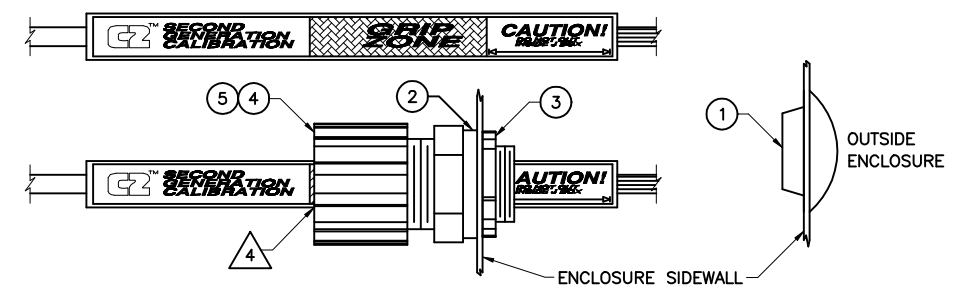
CUT SOLDER SIDE TRACE HERE

VIEW A

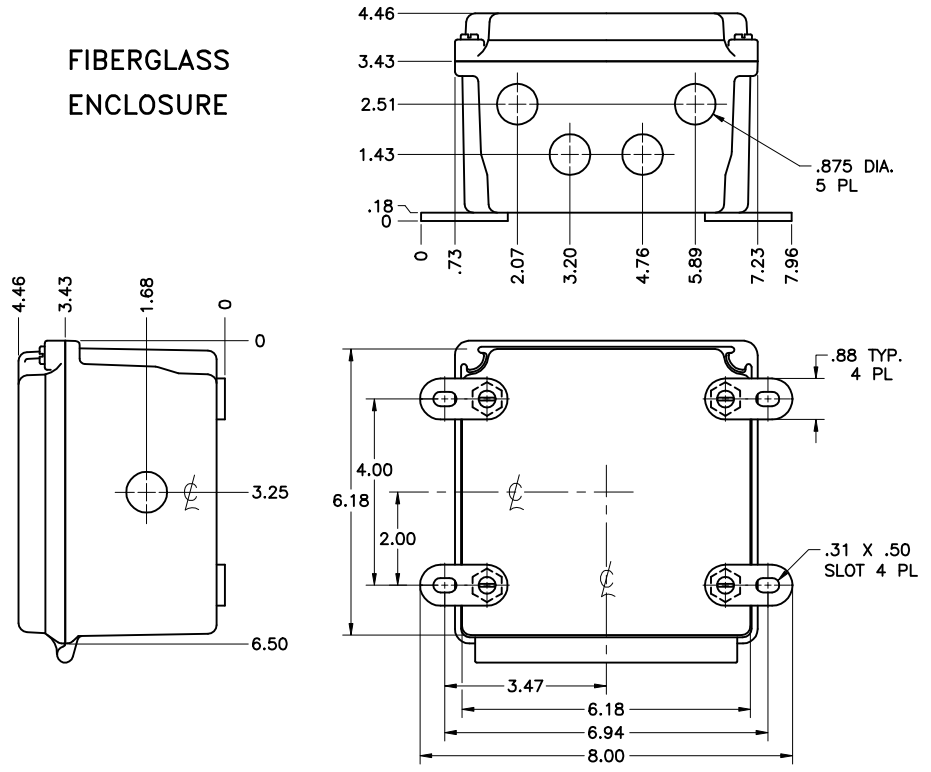
MODEL NUMBER

HI 215JB-XXX	DESCRIPTION	HARDY P/N
SS	STAINLESS STEEL	
1	NO TB10	0519-0483-01
2	W/TRIM POTS	0519-0483-02
3	W/TB10	0519-0483-03
4	W/TB10 & TRIM POTS	0519-0483-04
PS	PAINTED STEEL	
1	NO TB10	0519-0484-01
2	W/TRIM POTS	0519-0484-02
3	W/TB10	0519-0484-03
4	W/TB10 & TRIM POTS	0519-0484-04
FG	FIBERGLASS	
1	NO TB10	0519-0485-01
2	W/TRIM POTS	0519-0485-02
3	W/TB10	0519-0485-03
4	W/TB10 & TRIM POTS	0519-0485-04

CABLE CONNECTION

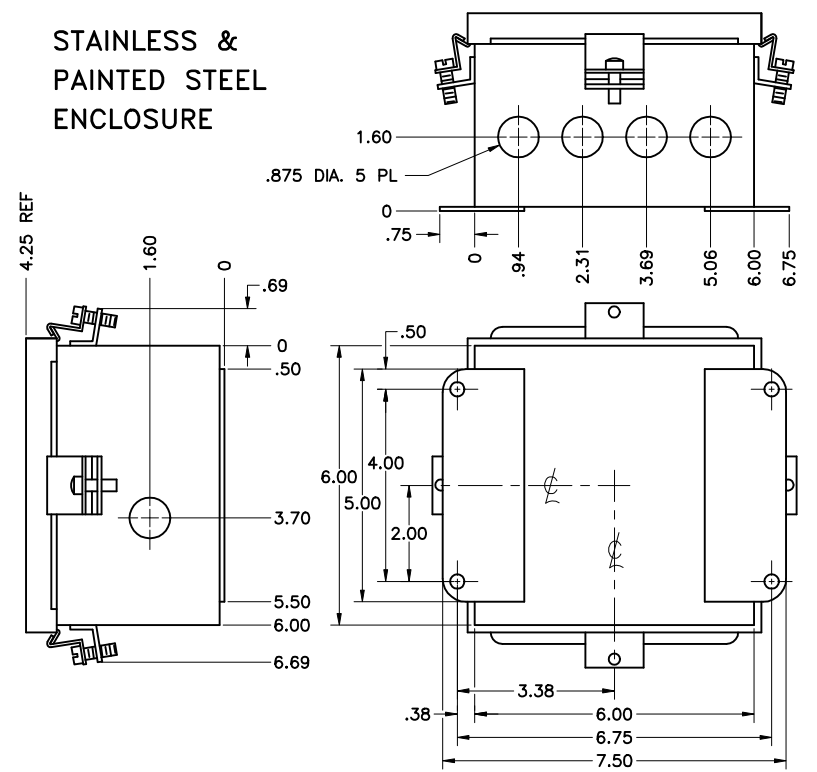


FIBERGLASS ENCLOSURE



NOTE: MODIFIED FIBERGLASS ENCLOSURE HARDY INSTRUMENTS P/N 0508-0838

STAINLESS & PAINTED STEEL ENCLOSURE



NOTE: MODIFIED STAINLESS STEEL ENCLOSURE HARDY INSTRUMENTS P/N 0508-0836
MODIFIED PAINTED STEEL ENCLOSURE HARDY INSTRUMENTS P/N 0508-0837

- OPTIONAL TRIM POTS CAN NOT BE USED WITH C2 OR SOFCAL.
 - REFER TO INSIDE OF JUNCTION BOX COVER FOR GUIDELINES.
 - INSERT C2 LOAD CELL CABLE THROUGH GRIP FITTING & TIGHTEN ON CABLE AREA MARKED GRIP ZONE. ALIGN END OF GRIP FITTING TO COMPLETELY COVER CABLE GRIP ZONE.
 - THE FOLLOWING PARTS ARE SHIPPED INSIDE JUNCTION BOX AND ARE TO BE INSTALLED IN LOCATIONS REQUIRED BY CUSTOMER.
- | ITEM | PART NO. | QTY | DESCRIPTION |
|------|-----------|-----|--|
| 1 | 2545-0009 | 2 | 1.0 INCH PUSH IN PLUG, NEMA 4 RATED |
| 2 | 2552-0003 | 5 | 1.125 INCH DIAMETER RUBBER GASKET |
| 3 | 2806-0014 | 5 | .50 INCH DIAMETER STEEL LOCKNUT FASTENER |
| *4 | 6007-0060 | 4 | 1/2 NPT NYLON CORD GRIP STRAIN RELIEF, .250-.375 DIA. (WHITE GRIP) |
| *5 | 6007-0061 | 1 | 1/2 NPT NYLON CORD GRIP STRAIN RELIEF, .375-.500 DIA. (BLUE GRIP) |
- * NOTE: FOR C2 OPTION ITEM 4 WILL BE QTY 0 & ITEM 5 WILL BE QTY 5.
- 2. USE P/N: 6020-0001 C2 CERTIFIED LOAD CELL CABLE.
 - 1. REFER TO LOAD CELL CAL SHEET OR WEIGHING ASSEMBLY SELECTION GUIDE FOR LOAD CELL WIRING COLOR CODE.

NOTES: UNLESS OTHERWISE SPECIFIED.

UNLESS OTHERWISE SPECIFIED DIMS ARE IN INCHES TOLERANCES ARE FRACTIONS = DECIMALS: .XX = ± .030 .XXX = ± .010 ANGLES = ± 0°-30°	CONTRACT NO.										
	APPROVALS	DATE									
MATERIAL	DRAWN P. COLCERNIAN	07-07-94	I/I DIAGRAM, LOAD CELL SUMMING								
FINISH	CHECKED R. BILEK	07-11-94									
	ISSUED B. O'ROURKE	07-11-94	<table border="1"> <tr> <td>SIZE</td> <td>FSCM</td> <td>DWG. NO.</td> <td>REV.</td> </tr> <tr> <td>D</td> <td>47181</td> <td>0584-0018</td> <td>D</td> </tr> </table>	SIZE	FSCM	DWG. NO.	REV.	D	47181	0584-0018	D
SIZE	FSCM	DWG. NO.	REV.								
D	47181	0584-0018	D								
SCALE: NONE FILENAME: 584018D1.DWG SHEET			1 of 1								